

Boardwalk

Jubilee Court

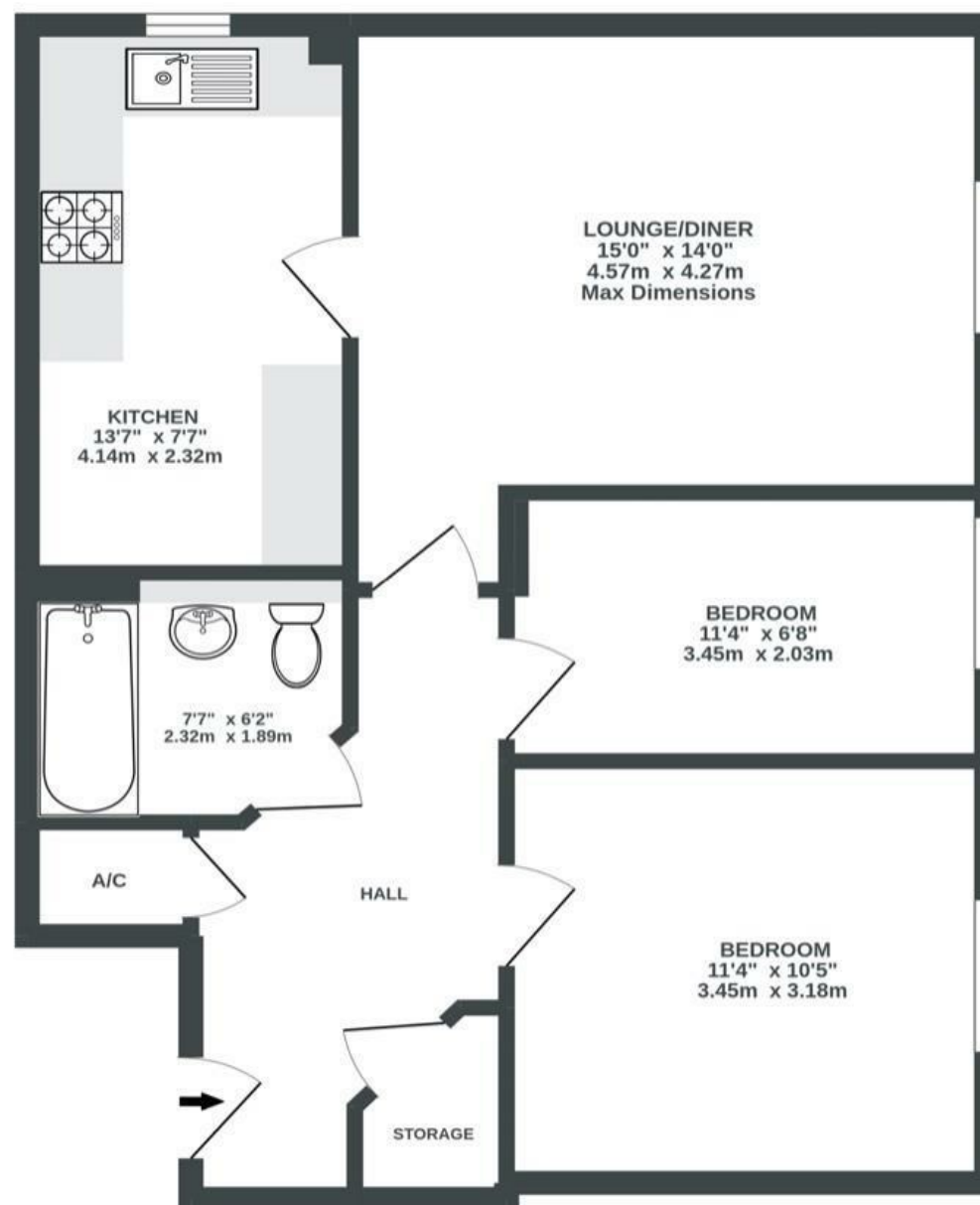
BRISLINGTON

APPROXIMATE FLOOR AREA
58.1 SQM / 625 SQFT

BOOK A VIEWING
01179 898 222
hello@boardwalkpropertyco.com



FIRST FLOOR
625 sq.ft. (58.1 sq.m.) approx.



Illustrations are for reference purposes only, measurements are approximate, not to scale.

Boardwalk

225 Wick Road

BRISLINGTON, BRISTOL



£225,000



2 Bedrooms



Bristol, BS4



1 Bathrooms

400

"Brislington is a safe and great area to live in, it's a vibrant spot with lots of fantastic local shops, schools, doctors, pharmacies, restaurants/cafes and grocery stores.

We bought the flat as our first home, however recently moving abroad with work means we have had to sell. It's a brilliant first home and or rental property. It's a warm, spacious and bright flat with great natural light, efficient to run with views overlooking the peaceful nature reserve behind. This really makes you feel like your not in the city centre, at the same time as being so close! The nature reserve is easily accessed behind the flat via the local access path. Sandy Park Road is really close with a good local bus into the city. We have thoroughly enjoyed living in the flat and will miss its appeal and friendly neighbours. We have kept it clean and modern and ready to live in. With safe allocated off-street parking the flat has provided us a great start to home ownership and will continue to provide a great home for others also".

